

MISSISSAUGA

# Festival of Trees

CreativeHub 1352

Connect · Collaborate · Create

# Program Guide

December 2025

[creativehub1352.ca/festival-of-trees](https://creativehub1352.ca/festival-of-trees)



WELCOME TO...

# The 5th Annual Mississauga Festival of Trees!

Thank you for joining us at the Mississauga Festival of Trees—a celebration of art, creativity, and community inside the historic Small Arms Inspection Building. Presented by CreativeHub 1352, this pay-what-you-can festival brings together stunning art installations, hands-on workshops, live performances, and a curated Holiday Market featuring local makers.

As a charitable non-profit, CreativeHub 1352 is committed to accessible and inclusive programming. We're grateful to our funders, sponsors, artists, vendors, volunteers, and partners whose support makes this event possible.

We hope you explore, discover, and enjoy everything the Festival has to offer.

*Meredith Wood*

Executive Director  
CreativeHub 1352



# Festival Schedule



- December 5** | Holiday Market & Art Exhibition | 7:00 PM – 10:30 PM
- December 6** | Holiday Market & Art Exhibition | 10:00 AM – 6:00 PM
- December 7** | Holiday Market & Art Exhibition | 10:00 AM – 6:00 PM
- December 8** | Festival Closed
- December 9** | Art Exhibition & Workshops | 1:00 PM – 8:00 PM
- December 10** | Art Exhibition & Workshops | 1:00 PM – 8:00 PM
- December 11** | Art Exhibition & Workshops | 1:00 PM – 7:00 PM
- December 12** | Holiday Market & Art Exhibition | 5:30 PM – 10:30 PM
- December 13** | Holiday Market & Art Exhibition | 10:00 AM – 6:00 PM
- December 14** | Holiday Market & Art Exhibition | 10:00 AM – 6:00 PM



# Holiday Market

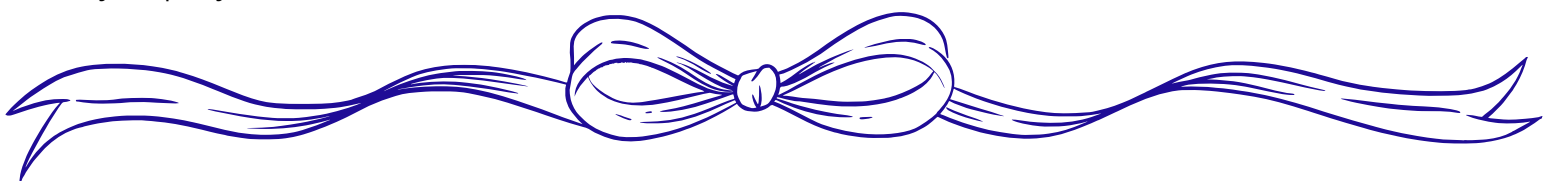
December 5-7 & December 12-14, 2025



# Meet the Vendors

Lakeview Needlework  
LazyBonesCozy  
Sweet Baboo Handmade  
Carnival of Kitsch  
Sewtoo Shop  
Tokita Kobo  
Alice and the Hatman  
Ro Tallud  
Amelia Moonstar Books & Prints  
Flow Stationary  
Turn Write Pens by Rob  
Vintage Products  
Knots in Time  
Wanderer's Candles  
JENS HOME  
Gillian Sych  
Planthead Pots  
themarypotter  
Michelle's Third Space Ceramics  
PUNCHINGSLOTH  
Fire & Fibre  
Kitchen Cat Textiles  
Erika Pohlmann Artist in Glass  
Art By Carri  
One Red Hare  
Singholens  
Studio ThatCrazyDoodler  
Brian Blakeman  
Paper Work  
AprilRains Photography  
Cathy Dunt Fine Art  
Agrarian Kitchen  
Alma Bakery and Foods  
LinkHaus  
Magic Oven Catering  
Kumain Kitchen  
Belinda Carmichael Silver Jewelry  
SofiCraft  
Etragens  
Inca Lily  
Strung Out On Pearls  
Clay Tulips by C

Ruffelle Designs  
WHM Designs  
Sheepiegirl knits by Annette  
Handmadebykarthi  
Crochet Me A Garden  
Bella Nella Handmade  
Black label coffee roasters Inc  
Bird & Wolf Specialty Coffee Roastery  
Delicious All Day Coffee  
Iwona Be Healthy  
Bains Orchards  
DesBarres Chocolate  
From Lex's Pantry/ Thorpe Toys  
Mojo's Peppa Sauce  
Moose River preserves  
SAB Services Limited (SAB Fruit Cake)  
Defiant Baker  
Kanata Soup Co.  
Rich & Robbi Small Batch Shortbread  
Manal's Chocolate  
Feast & Thrive, Inc.  
Papa Giuseppe's  
Venya Teas  
Ace of Tarts  
Bru Haus Co.  
McGuire Naturals  
Egyptian Botanicals  
Clover & Ivy Designs  
Studio Dialectica  
Leslie Buckle Designs  
Wild & Whimsy Fiber Art Studio  
Carole's Weavings  
Copper Fox Design  
Just for You by Susan  
The Green Cactus by Jen  
Your Unique Friends  
RoRo Art  
Myra's Art Studio  
Wood by Julia  
Wooden Things by Bob  
Maple Leather Handcrafts



# Holiday Market

December 5-7 & December 12 -14, 2025



# Festival Exhibition



The Mississauga Festival of Trees exhibition celebrates the power of nature and the environmental connections that sustain and inspire us. Through the artistic reimagining of the tree, these ten unique artworks invite you to reflect on the ecological and cultural systems that nourish us and to consider the living systems that support our world, in addition to our role in their care and preservation. Each tree installation grows from the connections between culture, community and place, reflecting the ways shared experience shapes how we understand and engage with the world around us. Rooted in both local and global contexts, The Festival of Trees explores art as a living, communal act; a conversation with the natural world that inspires more sustainable and interconnected futures.

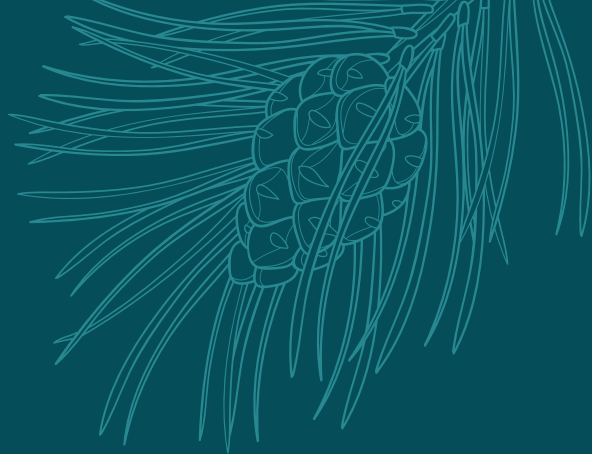
**Featuring works by 10 contemporary Ontario-based artists: Ben's Lemonaid, Tanya Besedina, D&S Projects, Joanne DeGraaf, Fausta Facciponte, Laura Fedynszyn, Paula Hartmann, Tara J Paterson, Jordan Shaw, and The Flying Bushman.**

# Exhibition Artists



# Ben's Lemonaid

## *SilverMaple*



Ben's Lemonaid is Junk. There's more than enough new stuff in the world. My work is about using what's already here— salvaging, repurposing, and reimagining the discarded.

*SilverMaple* depicts a maple tree at the end of Fall. With its bare branches and collection of leaf litter at its base, it's meant to invoke that cold winter-is-coming feeling that we all know and some of us even love. The trunk and bigger branches are made from reclaimed eavestroughs while the smaller branches are old tomato cages and garden fencing. The leaf litter is old steel sheets and reclaimed chicken wire.

*Reclaimed aluminum eavestroughs, tomato cages, garden fencing, chicken wire, steel sheets, piano strings, brake rotors and an old drafting chair. No paint added.  
Dimensions: 1132" x 96" (335 cm x 224 cm)*

MISSISSAUGA

*Festival  
of Trees*

**CreativeHub 1352**

Connect · Collaborate · Create



# Tanya Besedina

## *Roots of Light*



Photo Sanborg Productions

Roots of Light reveals the unseen connections that sustain life. Inspired by the underground networks through which trees share nutrients and messages, the installation transforms these hidden systems into glowing threads of light. It reminds us that survival—whether ecological or human—depends on connection. Just as trees nurture one another through roots and fungi, people thrive within communities of care and empathy. At the heart of the work, a porcelain cocoon radiates with delicate leaves, embodying both fragility and resilience. The luminous roots speak to the invisible bonds—natural and social—that link us, reminding us that light grows strongest when shared.

*Translucent porcelain and optical fibres.*

*Dimensions: Porcelain cocoon with leaves 39.4"  
(100 cm) and optical fibres 118.1" long (300 cm)*

MISSISSAUGA

*Festival  
of Trees*

**CreativeHub 1352**

Connect · Collaborate · Create

Katie Strang & Christine Dewancker (D&S Projects)

## *Through Lines*



This installation reflects Toronto's ongoing cycle of construction, destruction, and renewal through fragments and lines. Weathered bricks, collected from the shoreline, and once part of the city's built form, anchor a constellation of strings that rise toward a single vanishing point. Made from jute, cotton, and nylon, the lines suggest a chronology of construction practices. Together, these materials create a conical form and a vertical record of transformation. The work considers how urban matter breaks down and returns to the natural world, carrying the potential to be gathered again and shaped into something new.

*Found bricks, mason's line (cotton and nylon), jute.  
Dimensions: 98.4" x 118.1" (250 cm x 300 cm)*

MISSISSAUGA

*Festival  
of Trees*

CreativeHub 1352

Connect · Collaborate · Create

# Joanne Feeley DeGraaf

## *Momentum*



In Canada, we recognize the national symbol of the maple leaf that adorns our flag. The seeds of these trees twist and turn as they fall, each as unique as a fingerprint. Designed as they are to travel far and wide, the beauty and momentum of the vibrant ripened seeds have potential to be a different symbol for Canadians. They represent the energy and diversity of the individual people who make up our nation. Like seeds in a forest, we each can contribute uniquely, enriching and building Canada's future.

*Teabag paper, cellulose tape, upcycled plastic, reed, bamboo, fishing line, metal clasps, watercolour paint and gel medium.  
Dimensions: Maple keys measure 36" x 4" x 42-52" (91 cm x 10 cm x 107-132 cm)*

# Fausta Facciponte

## ***UNBOXED: A Celebration in Layers***



Photo Sanborg Productions

*UNBOXED: A Celebration in Layers* explores the holiday season as a ritual of unpacking – both literal and metaphorical. The installation, a tree formed from stacked storage boxes, invites curiosity and play, with glowing lights revealing glimpses of ornaments and keepsakes. Sourced from thrift stores and donations, it becomes a collective arrangement, weaving multiple histories into a single layered experience and giving new life to discarded objects. The textures, organized chaos, and subtle surprises reflect the joy of discovery and the connections shared across generations, celebrating memory, community, and the layered stories embedded in holiday objects.

*Cardboard boxes, holiday decorations  
sourced from thrift stores and donations.  
Dimensions: variable.*

MISSISSAUGA

*Festival  
of Trees*

**CreativeHub 1352**

Connect · Collaborate · Create

# Laura Fedynyszyn

## *Memorial for trees not yet fallen II*



*Memorial for trees not yet fallen II* focuses on invasive species and the threats they hold to Southern Ontario's varied ecosystems. This piece imagines an ecosystem shattered by spotted lantern flies, an invasive species that devours a wide variety of plant life. This is an invasive species that is on the cusp of the Canadian border poised to come up from the U.S. where they have already established. This piece uses compelling and beautiful aesthetics to draw viewers in where they are faced with the darker realities of our climate crises and issues surrounding sustainability.

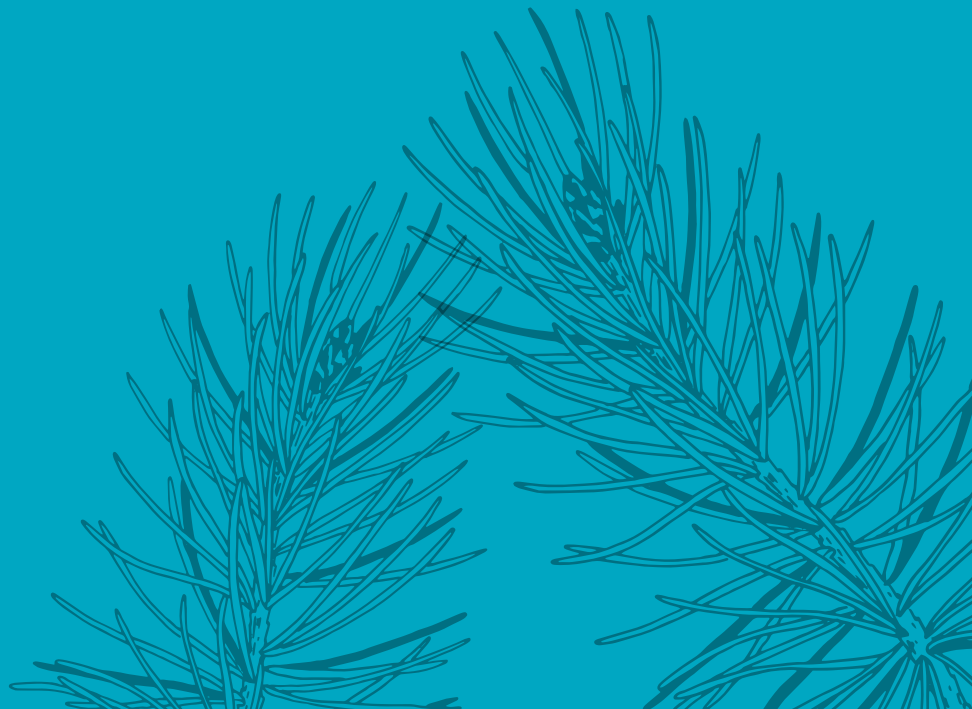
*Hand tinted lino prints on paper, fake birch tree, lights.  
Dimensions: variable, 102" x 96" (259 cm x 244 cm)*

MISSISSAUGA

*Festival  
of Trees*

**CreativeHub 1352**

Connect · Collaborate · Create



# Tara J Paterson

## *Bloom in the Concrete*



Photo Sanborg Productions

I wanted this tree to feel like a celebration of liveliness, queerness, of colour, of being unapologetically bright. It's a reminder that joy itself can be resistance. Each layer, each bloom, is a reflection of community and connection, of the beauty that happens when we let ourselves take up space fully and freely.

*Acrylic paint, plaster, plywood, foam core, metal wiring, card stock. Dimensions: 84" x 48" (213 cm x 122 cm)*

# The Flying Bushman

## *Hand of the Earth*



Photo Sanborg Productions

A giant hand emerges from the earth, reaching skyward, inviting viewers to imagine its journey. Where did it come from, and where is it going? This sculpture blurs the line between the human and the natural, transforming a familiar form into something mysterious and alive. The piece celebrates imagination, the unknown, and the joy of wondering about the stories hidden beneath the surface.

*Plywood, wood, burlap, plaster, wire mesh, acrylic paint.*  
*Dimensions: 96" x 24" (244 cm x 61 cm)*

MISSISSAUGA

*Festival  
of Trees*

**CreativeHub** 1352

Connect · Collaborate · Create

# Paula Hartmann

## *The Gathering Tree*



*The Gathering Tree* is a luminous installation inspired by traditional Polish paper chandeliers known as pajaki. Suspended together in the shape of a tree, the work transforms a folk art once crafted by women around the family table into a contemporary symbol of community, memory, and togetherness. Made from sustainable paper and rye straw, the installation shimmers with warmth and light—celebrating cultural heritage, creative resilience, and the unseen connections that bind us.

*Paper, rye straw, cotton thread, metal hoops.*

*Dimensions: 90" x 90" x 115" (228 cm x 228 cm x 290 cm).*

MISSISSAUGA

*Festival  
of Trees*

**CreativeHub 1352**

Connect · Collaborate · Create

# Jordan Shaw

## *Networked Growth*



Photo Sanborg Productions

*Networked Growth* is a sculptural installation that reimagines rug hooking traditions through the lens of digital connection. Inspired by memories of the artist's grandmother's handcrafted rugs, the nine-foot-tall tree-like form is woven from multicoloured upcycled Ethernet cables threaded through a wire-mesh frame. From a distance, it resembles a stylized evergreen—a symbol of resilience and gathering in winter. Up close, visitors discover intricate weavings of cable and a glowing "fireplace" at its base, where a small screen displays moving images powered through the sculpture's own network of cables. The work celebrates how communities are woven together and stay connected across distance, merging craft traditions with the digital threads that shape our modern lives.

*Upcycled Ethernet cable (multicolour), galvanized wire mesh, SPF frame, Raspberry Pi, HDMI LCD screen, river stones. Dimensions: 108" x 72" (274 cm x 183 cm)*

MISSISSAUGA

*Festival  
of Trees*

**CreativeHub 1352**

Connect · Collaborate · Create

# Live Music

December 5-7 & December 12-14, 2025



**The Dedbeats**  
Friday, December 5  
7:00 PM - 9:30 PM



**Naro & Layton**  
Saturday, December 6  
12:30 PM - 4:30 PM



**Ragwax**  
Sunday, December 7  
12:30 PM - 4:30 PM



**Krista Blondin** Friday,  
December 12  
6:00 PM - 10:00 PM



**Crossfield Bend**  
Saturday, December 13  
12:30 PM - 4:30 PM



**Meep Moop**  
Sunday, December 14  
12:30 PM - 4:30 PM

# Workshop Series

December 6–14, 2025

*Experience the magic of the Festival of Trees at our Workshops!*

**Sponsored by Visit Mississauga**



Photo Sanborg Productions

Take part in our festive hands-on workshops, where creativity comes alive! Led by talented local artists and makers, these sessions invite participants of all ages to craft unique holiday creations. Whether you're looking to learn a new skill, spend time with family, or simply get into the holiday spirit, our workshops offer a fun and inspiring way to experience the Festival.

Registration required.  
Please visit our [website](#)  
for full details

**Beading: White Pine**  
December 6 • 10:30 AM – 1:30 PM  
Instructor: Gay Nemeth

**Sew Your Own Cushion Cover**  
December 9 • 6:30 PM – 8:30 PM  
Instructor: Thai Doan

**Linocut Holiday Card Printmaking**  
December 6 • 2:30 PM – 5:00 PM  
Instructor: Pardis Pahlavanlu

**Festive Kokedama**  
December 9 • 6:30 PM – 8:00 PM  
Instructor: Yogita Tandon

**Soft Pastels: Glass Tree Ornaments**  
December 7 • 10:30 AM – 1:00 PM  
Instructor: Fulya Bulur

**Watercolour: Pine Forest**  
December 10 • 6:30 PM – 8:30 PM  
Instructor: Maryna Salagub

**Needle Felting: Snowman**  
December 7 • 2:00 PM – 5:00 PM  
Instructor: Cathy Disbrow

**Make Your Own Bag**  
December 12 • 7:00 PM – 9:00 PM  
Instructor: Thai Doan

# Workshop Series

December 6–14, 2025



## **Crochet Snowflake for Beginners**

December 13 • 12:00 PM – 1:30 PM

Instructor: Rosa Wharton

## **Holiday Candle**

December 13 • 3:00 PM – 4:00 PM

Instructor: Yogita Tandon

## **Cookie Decorating**

December 14 • 10:30 AM – 11:30 AM

Instructor: Julie Clarke

## **Spruce Sapling Potted Art**

December 14 • 12:30 PM – 2:30 PM

Instructor: Yarim Hinojosa

## **DIY Natural Body Scrub Mask**

December 14 • 3:30 PM – 4:30 PM

Instructor: Mohit Dayaram

## Community Programming December 9 & 13, 2025

### **Backyard Birds Through the Seasons: TRCA**

December 13 • 10:30 AM – 11:45 AM • Pre-registration required

Led by Jeremy Pearson and Matthew Zuniga, Toronto and Region Conservation Authority. This is a free event supported by Peel with a PWYC suggested \$5 with no minimum contribution. All proceeds go toward CreativeHub 1352's yearly programming.

### **Community Knit Night**

December 9 • 6:30 PM – 8:30 PM • • Pre-registration required

Bring your knitting needles, crochet hook and yarn and enjoy a cozy, magical evening of community knitting with 'Spin Me a Yarn' under the sculptures at the Festival of Trees. This is a free event with Pay-what-you-can for admission into the Festival of Trees



# CreativeHub 1352

Connect · Collaborate · Create

## About Us

CreativeHub 1352 is a non-profit, volunteer-based organization, who create, collaborate and connect with visitors by developing arts, heritage and environmental events and programs at the Small Arms Inspection Building ("SAIB"), Mississauga, and the Greater Toronto Area.

All proceeds from the Mississauga of Trees supports CreativeHub 1352 community Arts, Heritage and Environmental Initiatives.

**Charitable Status #: 848778866RR0001**

 @creativehub\_1352  @creativehub1352

 creativehub1352.ca  info@creativehub1352.ca

*We are proud to call Lakeview home and honoured to help strengthen our community.*

*Proud foundational sponsor of*

**CreativeHub 1352**

Connect · Collaborate · Create



**MODERN**  
mississauga

**Proud to be  
the official 2025 media  
partner for the Mississauga  
Festival of Trees!**



IN 19 CITIES ACROSS ONTARIO

FOOD & LIFESTYLE

**MISSISSAUGA**  
ONTARIO LOCAL NEWS

**YOUR CITY WITHin**

YOUR HYPERLOCAL SOURCE FOR NEWS AND ENTERTAINMENT

**Scotties**  
TOURNAMENT OF HEARTS®  
— MISSISSAUGA 2026 —

**STONES WILL FLY IN MISSISSAUGA**

**CURLING.CA/TICKETS**  
JAN 23 – FEB 1 | PARAMOUNT FINE FOODS CENTRE

VISIT **MISSISSAUGA**  
A CULTURAL CANVAS

Ontario 

Canada 



# Event Team



## **Executive Director**

Meredith Wood

## **Event Lead**

Jess Knights

## **Marketing & Communications**

Melanie Lowe, Marketing Manager

## **Art Installations**

Richard A. Posa, Installation Logistics  
Jo Yetter, Programs Officer  
Anna Gulbinski, Review Committee  
Ann Ivy Male, Review Committee  
Arlene San Agustin, Review Committee

## **Lighting Installations**

Christian Horoszczak, Lighting Designer  
Mathilda Kane, Installation Lead  
Nathan De Medeiros, Lighting Crew

## **Festival Workshops**

Chitra Iyer, Workshop Coordinator

## **Vendor Market**

Natalie Scola, Programs Manager  
Jo Yetter, Review Committee  
Arlene San Agustin, Review Committee

## **Decorations**

Jo Yetter, Programs Officer  
Sharon McLeod  
Val Barton  
Tony Barton  
Rupa Kanani  
Richard A. Posa  
wona Vineham  
Michael Scholz  
Natalie Scola  
Perri McCall  
Jennifer MacDonald  
Maira  
Thersea

## **On-Site Logistics**

Chris Wood

## **Volunteer Coordination**

Nichol Ouderkirk, Director of Volunteers

## **Food & Beverage**

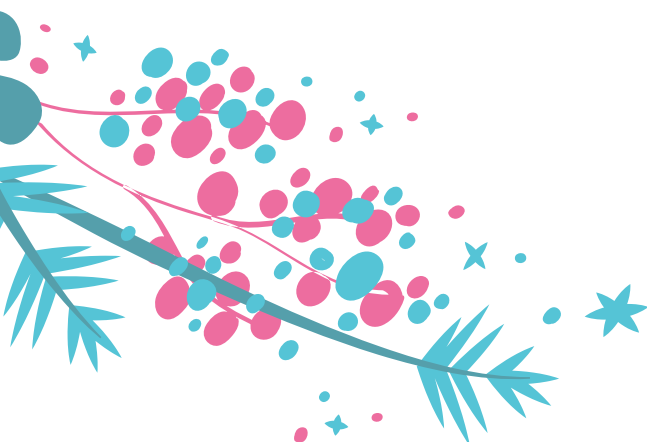
Elaine Martin

## **Photography**

Gabriella Bank  
Hayley Cobran

## **CreativeHub 1352 Board of Directors**

Margot Stevens, Chair  
Clara Eta, Director, Treasurer  
Sharon McLeod, Director, Secretary  
Nichol Ouderkirk, Director, Volunteer Development  
Renzo Delvecchio, Director at Large  
Glodeane Brown, Director at Large  
Doug Wallace, Vice Chair, Director at Large  
Delisa Abraham, Director, Marketing and Fundraising





MISSISSAUGA

*Festival  
of Trees*

*Thanks for coming.  
See you next year!*

**CreativeHub 1352**

Connect · Collaborate · Create



@creativehub\_1352



@creativehub1352



creativehub1352.ca



info@creativehub1352.ca