

MISSISSAUGA

Festival of Trees

CreativeHub 1352

Connect · Collaborate · Create

Program Guide

December 2025

creativehub1352.ca/festival-of-trees



WELCOME TO...

The 5th Annual Mississauga Festival of Trees!

Thank you for joining us at the Mississauga Festival of Trees—a celebration of art, creativity, and community inside the historic Small Arms Inspection Building. Presented by CreativeHub 1352, this pay-what-you-can festival brings together stunning art installations, hands-on workshops, live performances, and a curated Holiday Market featuring local makers.

As a charitable non-profit, CreativeHub 1352 is committed to accessible and inclusive programming. We're grateful to our funders, sponsors, artists, vendors, volunteers, and partners whose support makes this event possible.

We hope you explore, discover, and enjoy everything the Festival has to offer.

Meredith Wood

Executive Director
CreativeHub 1352



Festival Schedule



- December 5** | Holiday Market & Art Exhibition | 7:00 PM – 10:30 PM
- December 6** | Holiday Market & Art Exhibition | 10:00 AM – 6:00 PM
- December 7** | Holiday Market & Art Exhibition | 10:00 AM – 6:00 PM
- December 8** | Festival Closed
- December 9** | Art Exhibition & Workshops | 1:00 PM – 8:00 PM
- December 10** | Art Exhibition & Workshops | 1:00 PM – 8:00 PM
- December 11** | Art Exhibition & Workshops | 1:00 PM – 7:00 PM
- December 12** | Holiday Market & Art Exhibition | 5:30 PM – 10:30 PM
- December 13** | Holiday Market & Art Exhibition | 10:00 AM – 6:00 PM
- December 14** | Holiday Market & Art Exhibition | 10:00 AM – 6:00 PM



Holiday Market

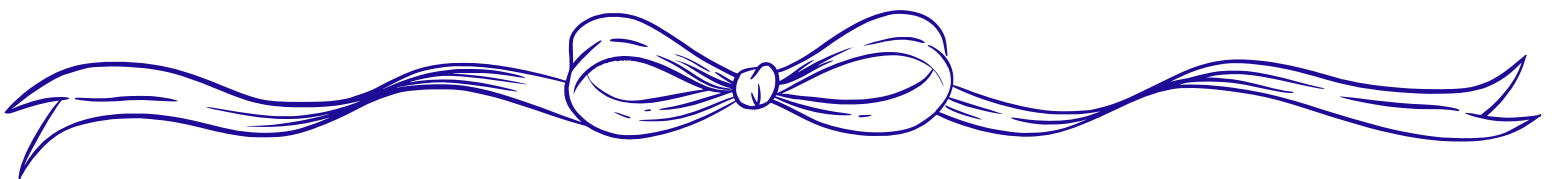
December 5-7 & December 12-14, 2025



Meet the Vendors

Lakeview Needlework
LazyBonesCozy
Sweet Baboo Handmade
Carnival of Kitsch
Sewtoo Shop
Tokita Kobo
Alice and the Hatman
Ro Tallud
Amelia Moonstar Books & Prints
Flow Stationary
Turn Write Pens by Rob
Vintage Products
Knots in Time
Wanderer's Candles
JENS HOME
Gillian Sych
Planthead Pots
themarypotter
Michelle's Third Space Ceramics
PUNCHINGSLOTH
Fire & Fibre
Kitchen Cat Textiles
Erika Pohlmann Artist in Glass
Art By Carri
One Red Hare
Singholens
Studio ThatCrazyDoodler
Brian Blakeman
Paper Work
AprilRains Photography
Cathy Dunt Fine Art
Agrarian Kitchen
Alma Bakery and Foods
LinkHaus
Magic Oven Catering
Kumain Kitchen
Belinda Carmichael Silver Jewelry
SofiCraft
Etragens
Inca Lily
Strung Out On Pearls
Clay Tulips by C

Ruffelle Designs
WHM Designs
Sheepiegirl knits by Annette
Handmadebykarthi
Crochet Me A Garden
Bella Nella Handmade
Black label coffee roasters Inc
Bird & Wolf Specialty Coffee Roastery
Delicious All Day Coffee
Iwona Be Healthy
Bains Orchards
DesBarres Chocolate
From Lex's Pantry/ Thorpe Toys
Mojo's Peppa Sauce
Moose River preserves
SAB Services Limited (SAB Fruit Cake)
Defiant Baker
Kanata Soup Co.
Rich & Robbi Small Batch Shortbread
Manal's Chocolate
Feast & Thrive, Inc.
Papa Giuseppe's
Venya Teas
Ace of Tarts
Bru Haus Co.
McGuire Naturals
Egyptian Botanicals
Clover & Ivy Designs
Studio Dialectica
Leslie Buckle Designs
Wild & Whimsy Fiber Art Studio
Carole's Weavings
Copper Fox Design
Just for You by Susan
The Green Cactus by Jen
Your Unique Friends
RoRo Art
Myra's Art Studio
Wood by Julia
Wooden Things by Bob
Maple Leather Handcrafts



Holiday Market

December 5-7 & December 12 -14, 2025



Festival Exhibition



The Mississauga Festival of Trees exhibition celebrates the power of nature and the environmental connections that sustain and inspire us. Through the artistic reimagining of the tree, these ten unique artworks invite you to reflect on the ecological and cultural systems that nourish us and to consider the living systems that support our world, in addition to our role in their care and preservation. Each tree installation grows from the connections between culture, community and place, reflecting the ways shared experience shapes how we understand and engage with the world around us. Rooted in both local and global contexts, The Festival of Trees explores art as a living, communal act; a conversation with the natural world that inspires more sustainable and interconnected futures.

Featuring works by 10 contemporary Ontario-based artists: Ben's Lemonaid, Tanya Besedina, D&S Projects, Joanne DeGraaf, Fausta Facciponte, Laura Fedynyszyn, Paula Hartmann, Tara J Paterson, Jordan Shaw, and The Flying Bushman.

Exhibition Artists



Ben's Lemonaid

SilverMaple



Ben's Lemonaid is Junk. There's more than enough new stuff in the world. My work is about using what's already here— salvaging, repurposing, and reimagining the discarded.

SilverMaple depicts a maple tree at the end of Fall. With its bare branches and collection of leaf litter at its base, it's meant to invoke that cold winter-is-coming feeling that we all know and some of us even love. The trunk and bigger branches are made from reclaimed eavestroughs while the smaller branches are old tomato cages and garden fencing. The leaf litter is old steel sheets and reclaimed chicken wire.

*Reclaimed aluminum eavestroughs, tomato cages, garden fencing, chicken wire, steel sheets, piano strings, brake rotors and an old drafting chair. No paint added.
Dimensions: 1132" x 96" (335 cm x 224 cm)*

Tanya Besedina

Roots of Light



Photo Sanborg Productions

Roots of Light reveals the unseen connections that sustain life. Inspired by the underground networks through which trees share nutrients and messages, the installation transforms these hidden systems into glowing threads of light. It reminds us that survival—whether ecological or human—depends on connection. Just as trees nurture one another through roots and fungi, people thrive within communities of care and empathy. At the heart of the work, a porcelain cocoon radiates with delicate leaves, embodying both fragility and resilience. The luminous roots speak to the invisible bonds—natural and social—that link us, reminding us that light grows strongest when shared.

Translucent porcelain and optical fibres.

Dimensions: Porcelain cocoon with leaves 39.4" (100 cm) and optical fibres 118.1" long (300 cm)

MISSISSAUGA

*Festival
of Trees*

CreativeHub 1352

Connect · Collaborate · Create

Katie Strang & Christine Dewancker (D&S Projects)

Through Lines



This installation reflects Toronto's ongoing cycle of construction, destruction, and renewal through fragments and lines. Weathered bricks, collected from the shoreline, and once part of the city's built form, anchor a constellation of strings that rise toward a single vanishing point. Made from jute, cotton, and nylon, the lines suggest a chronology of construction practices. Together, these materials create a conical form and a vertical record of transformation. The work considers how urban matter breaks down and returns to the natural world, carrying the potential to be gathered again and shaped into something new.

*Found bricks, mason's line (cotton and nylon), jute.
Dimensions: 98.4" x 118.1" (250 cm x 300 cm)*

MISSISSAUGA

*Festival
of Trees*

CreativeHub 1352

Connect · Collaborate · Create

Joanne Feeley DeGraaf

Momentum



In Canada, we recognize the national symbol of the maple leaf that adorns our flag. The seeds of these trees twist and turn as they fall, each as unique as a fingerprint. Designed as they are to travel far and wide, the beauty and momentum of the vibrant ripened seeds have potential to be a different symbol for Canadians. They represent the energy and diversity of the individual people who make up our nation. Like seeds in a forest, we each can contribute uniquely, enriching and building Canada's future.

*Teabag paper, cellulose tape, upcycled plastic, reed, bamboo, fishing line, metal clasps, watercolour paint and gel medium.
Dimensions: Maple keys measure 36" x 4" x 42-52" (91 cm x 10 cm x 107-132 cm)*

Fausta Facciponte

UNBOXED: A Celebration in Layers



Photo Sanborg Productions

UNBOXED: A Celebration in Layers explores the holiday season as a ritual of unpacking – both literal and metaphorical. The installation, a tree formed from stacked storage boxes, invites curiosity and play, with glowing lights revealing glimpses of ornaments and keepsakes. Sourced from thrift stores and donations, it becomes a collective arrangement, weaving multiple histories into a single layered experience and giving new life to discarded objects. The textures, organized chaos, and subtle surprises reflect the joy of discovery and the connections shared across generations, celebrating memory, community, and the layered stories embedded in holiday objects.

*Cardboard boxes, holiday decorations
sourced from thrift stores and donations.
Dimensions: variable.*

Paula Hartmann

The Gathering Tree



The Gathering Tree is a luminous installation inspired by traditional Polish paper chandeliers known as pajaki. Suspended together in the shape of a tree, the work transforms a folk art once crafted by women around the family table into a contemporary symbol of community, memory, and togetherness. Made from sustainable paper and rye straw, the installation shimmers with warmth and light—celebrating cultural heritage, creative resilience, and the unseen connections that bind us.

Paper, rye straw, cotton thread, metal hoops.

Dimensions: 90" x 90" x 115" (228 cm x 228 cm x 290 cm).

Tara J Paterson

Bloom in the Concrete



Photo Sanborg Productions

I wanted this tree to feel like a celebration of liveliness, queerness, of colour, of being unapologetically bright. It's a reminder that joy itself can be resistance. Each layer, each bloom, is a reflection of community and connection, of the beauty that happens when we let ourselves take up space fully and freely.

Acrylic paint, plaster, plywood, foam core, metal wiring, card stock. Dimensions: 84" x 48" (213 cm x 122 cm)

Jordan Shaw

Networked Growth



Photo Sanborg Productions

Networked Growth is a sculptural installation that reimagines rug hooking traditions through the lens of digital connection. Inspired by memories of the artist's grandmother's handcrafted rugs, the nine-foot-tall tree-like form is woven from multicoloured upcycled Ethernet cables threaded through a wire-mesh frame. From a distance, it resembles a stylized evergreen—a symbol of resilience and gathering in winter. Up close, visitors discover intricate weavings of cable and a glowing “fireplace” at its base, where a small screen displays moving images powered through the sculpture's own network of cables. The work celebrates how communities are woven together and stay connected across distance, merging craft traditions with the digital threads that shape our modern lives.

Upcycled Ethernet cable (multicolour), galvanized wire mesh, SPF frame, Raspberry Pi, HDMI LCD screen, river stones. Dimensions: 108" x 72" (274 cm x 183 cm)

MISSISSAUGA

*Festival
of Trees*

CreativeHub 1352

Connect · Collaborate · Create

Laura Fedynyszyn

Memorial for trees not yet fallen II



Memorial for trees not yet fallen II focuses on invasive species and the threats they hold to Southern Ontario's varied ecosystems. This piece imagines an ecosystem shattered by spotted lantern flies, an invasive species that devours a wide variety of plant life. This is an invasive species that is on the cusp of the Canadian border poised to come up from the U.S. where they have already established. This piece uses compelling and beautiful aesthetics to draw viewers in where they are faced with the darker realities of our climate crises and issues surrounding sustainability.

*Hand tinted lino prints on paper, fake birch tree, lights.
Dimensions: variable, 102" x 96" (259 cm x 244 cm)*

MISSISSAUGA

*Festival
of Trees*

CreativeHub 1352

Connect · Collaborate · Create



The Flying Bushman

Hand of the Earth



Photo Sanborg Productions

A giant hand emerges from the earth, reaching skyward, inviting viewers to imagine its journey. Where did it come from, and where is it going? This sculpture blurs the line between the human and the natural, transforming a familiar form into something mysterious and alive. The piece celebrates imagination, the unknown, and the joy of wondering about the stories hidden beneath the surface.

Plywood, wood, burlap, plaster, wire mesh, acrylic paint.
Dimensions: 96" x 24" (244 cm x 61 cm)

Live Music

December 5–7 & December 12–14, 2025



The Dedbeats
Friday, December 5
7:00 PM – 9:30 PM



Naro & Layton
Saturday, December 6
12:30 PM – 4:30 PM



Ragwax
Sunday, December 7
12:30 PM – 4:30 PM



Krista Blondin Friday,
December 12
6:00 PM – 10:00 PM



Crossfield Bend
Saturday, December 13
12:30 PM – 4:30 PM



Meep Moop
Sunday, December 14
12:30 PM – 4:30 PM

Workshop Series

December 6–14, 2025

Experience the magic of the Festival of Trees at our Workshops!

Sponsored by Visit Mississauga



Photo Sanborg Productions

Take part in our festive hands-on workshops, where creativity comes alive! Led by talented local artists and makers, these sessions invite participants of all ages to craft unique holiday creations. Whether you're looking to learn a new skill, spend time with family, or simply get into the holiday spirit, our workshops offer a fun and inspiring way to experience the Festival.

Registration required.
Please visit our [website](#)
for full details

Beading: White Pine

December 6 • 10:30 AM – 1:30 PM
Instructor: Gay Nemeth

Sew Your Own Cushion Cover

December 9 • 6:30 PM – 8:30 PM
Instructor: Thai Doan

Linocut Holiday Card Printmaking

December 6 • 2:30 PM – 5:00 PM
Instructor: Pardis Pahlavanlu

Festive Kokedama

December 9 • 6:30 PM – 8:00 PM
Instructor: Yogita Tandon

Soft Pastels: Glass Tree Ornaments

December 7 • 10:30 AM – 1:00 PM
Instructor: Fulya Bulur

Watercolour: Pine Forest

December 10 • 6:30 PM – 8:30 PM
Instructor: Maryna Salagub

Needle Felting: Snowman

December 7 • 2:00 PM – 5:00 PM
Instructor: Cathy Disbrow

Make Your Own Bag

December 12 • 7:00 PM – 9:00 PM
Instructor: Thai Doan

Workshop Series

December 6–14, 2025



Crochet Snowflake for Beginners

December 13 • 12:00 PM – 1:30 PM

Instructor: Rosa Wharton

Holiday Candle

December 13 • 3:00 PM – 4:00 PM

Instructor: Yogita Tandon

Cookie Decorating

December 14 • 10:30 AM – 11:30 AM

Instructor: Julie Clarke

Spruce Sapling Potted Art

December 14 • 12:30 PM – 2:30 PM

Instructor: Yarim Hinojosa

DIY Natural Body Scrub Mask

December 14 • 3:30 PM – 4:30 PM

Instructor: Mohit Dayaram

Community Programming December 9 & 13, 2025

Backyard Birds Through the Seasons: TRCA

December 13 • 10:30 AM – 11:45 AM • Pre-registration required

Led by Jeremy Pearson and Matthew Zuniga, Toronto and Region Conservation Authority. This is a free event supported by Peel with a PWYC suggested \$5 with no minimum contribution. All proceeds go toward CreativeHub 1352's yearly programming.

Community Knit Night

December 9 • 6:30 PM – 8:30 PM • • Pre-registration required

Bring your knitting needles, crochet hook and yarn and enjoy a cozy, magical evening of community knitting with 'Spin Me a Yarn' under the sculptures at the Festival of Trees. This is a free event with Pay-what-you-can for admission into the Festival of Trees



CreativeHub 1352

Connect · Collaborate · Create

About Us

CreativeHub 1352 is a non-profit, volunteer-based organization, who create, collaborate and connect with visitors by developing arts, heritage and environmental events and programs at the Small Arms Inspection Building ("SAIB"), Mississauga, and the Greater Toronto Area.

All proceeds from the Mississauga of Trees supports CreativeHub 1352 community Arts, Heritage and Environmental Initiatives.

Charitable Status #: 848778866RR0001

Instagram: @creativehub_1352 Facebook: @creativehub1352

Website: creativehub1352.ca Email: info@creativehub1352.ca

*We are proud to call Lakeview
home and honoured to help
strengthen our community.*

Proud foundational sponsor of

CreativeHub 1352

Connect • Collaborate • Create



MODERN
mississauga

**Proud to be
the official 2025 media
partner for the Mississauga
Festival of Trees!**



modernmississauga.com

IN 19 CITIES ACROSS ONTARIO

MISSISSAUGA
ONTARIO LOCAL NEWS

YOUR HYPERLOCAL SOURCE FOR NEWS AND ENTERTAINMENT

FOOD & LIFESTYLE

**YOUR
CITY
WITHin**



Scotties
TOURNAMENT OF HEARTS®
— MISSISSAUGA 2026 —

**STONES WILL
FLY IN
MISSISSAUGA**



CURLING.CA/TICKETS

JAN 23 – FEB 1 | PARAMOUNT FINE FOODS CENTRE

VISIT
MISSISSAUGA
A CULTURAL CANVAS

Ontario

Canada



Event Team



Executive Director

Meredith Wood

Event Lead

Jess Knights

Marketing & Communications

Melanie Lowe, Marketing Manager

Art Installations

Richard A. Posa, Installation Logistics
Jo Yetter, Programs Officer
Anna Gulbinski, Review Committee
Ann Ivy Male, Review Committee
Arlene San Agustin, Review Committee

Lighting Installations

Christian Horoszczak, Lighting Designer
Mathilda Kane, Installation Lead
Nathan De Medeiros, Lighting Crew

Festival Workshops

Chitra Iyer, Workshop Coordinator

Vendor Market

Natalie Scola, Programs Manager
Jo Yetter, Review Committee
Arlene San Agustin, Review Committee

Decorations

Jo Yetter, Programs Officer
Sharon McLeod
Val Barton
Tony Barton
Rupa Kanani
Richard A. Posa
wona Vineham
Michael Scholz
Natalie Scola
Perri McCall
Jennifer MacDonald
Moiria
Thersea

On-Site Logistics

Chris Wood

Volunteer Coordination

Nichol Ouderkirk, Director of Volunteers

Food & Beverage

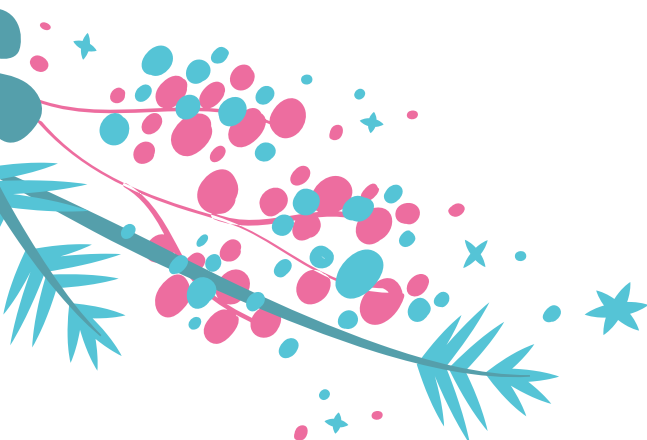
Elaine Martin

Photography

Gabriella Bank
Hayley Cobran

CreativeHub 1352 Board of Directors

Margot Stevens, Chair
Clara Eta, Director, Treasurer
Sharon McLeod, Director, Secretary
Nichol Ouderkirk, Director, Volunteer Development
Renzo Delvecchio, Director at Large
Glodeane Brown, Director at Large
Doug Wallace, Vice Chair, Director at Large
Delisa Abraham, Director, Marketing and Fundraising





*Thanks for coming.
See you next year!*

CreativeHub 1352

Connect · Collaborate · Create



@creativehub_1352



@creativehub1352



creativehub1352.ca



info@creativehub1352.ca